

Wheel loaders



**WACKER
NEUSON**
all it takes!



These reasons speak for wheel loaders from Wacker Neuson.

1. Full power – precisely for your requirements.

Optimal efficiency output identifies each wheel loader from Wacker Neuson. In this way, you always get the power that you need in all classes – combined with maximum efficiency.

2. Full product range – for varied applications all year round.

You can outfit a wheel loader from Wacker Neuson with different attachments time and time again for new jobs: from the traditional digging bucket to the pallet fork to the numerous special attachments for the construction industry, recycling, municipalities and gardening and landscaping. In this way you create exactly the all-rounder that you need.

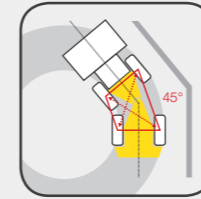
3. Full economic efficiency – and in every respect.

High quality materials for a long service life. Economic fuel consumption. Good maneuverability for quick loading cycles. Maintenance that is done in no time. We at Wacker Neuson always consider economic efficiency as an overall concept.

Wacker Neuson – all it takes!

We offer products and services rendered that meet your high requirements and diverse applications. Wacker Neuson stands for reliability. This of course also applies to our large range of wheel loaders. We do our best every day to ensure your success. And we do this full of passion for our jobs.

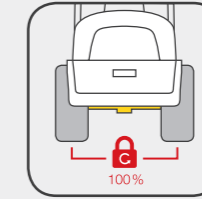
Wheel loader expertise down to the last detail.



Maneuverable to the smallest nook

Due to the articulated pendulum joint, the machines are extremely maneuverable and have extreme off-road capability.

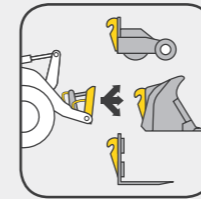
You can find details on page 16.



100% connectable differential lock

Good traction, even on difficult surfaces, is made possible with the 100% engageable differential lock.

Learn more on page 17.



Numerous connections for attachments

Use the wheel loaders from Wacker Neuson as you need them – the matching hydraulic connections and quick change plates make it possible.



Comfortable cabin design

The cabins of our wheel loaders offer a great deal of comfort with their spacious design and outfitting details.

Read more on page 18.



Wacker Neuson distinguishes particularly economical and environmentally-friendly products with the ECO seal, including the wheel loader WL20e.

All wheel loaders in an overview.



WL20e



Bucket capacity: 0.2 m³
> Page 06



WL20

0.2 m³
> Page 08



WL25

0.35 m³
> Page 08



WL32

0.45 m³
> Page 09



WL34

0.6 m³
> Page 10



WL38

0.6 m³
> Page 11



WL44

Bucket capacity: 0.8 m³
> Page 12



WL52

0.8 m³
> Page 13



WL54

1.0 m³
> Page 12



WL60

1.0 m³
> Page 14



WL70

2.0 m³
> Page 15

Wheel loaders from Wacker Neuson offer a solution for everything.

You are adding a true all-rounder to your team with a wheel loader from Wacker Neuson. For the various attachments not only prove themselves in all application areas on the construction site, but also in many other areas and industries.

Trailer coupling for the transport of construction site equipment, such as the light tower.



Powerful hydraulics: perfect for application with performance-enhancing attachments, such as sweepers, asphalt milling units or snow blowers.



Filling with a side dump bucket: good view from the cabin and high level of stability.



Practical for road and path construction: WL32 with ground planer.



Reliable load carrier – and always with a good view of the transport material.

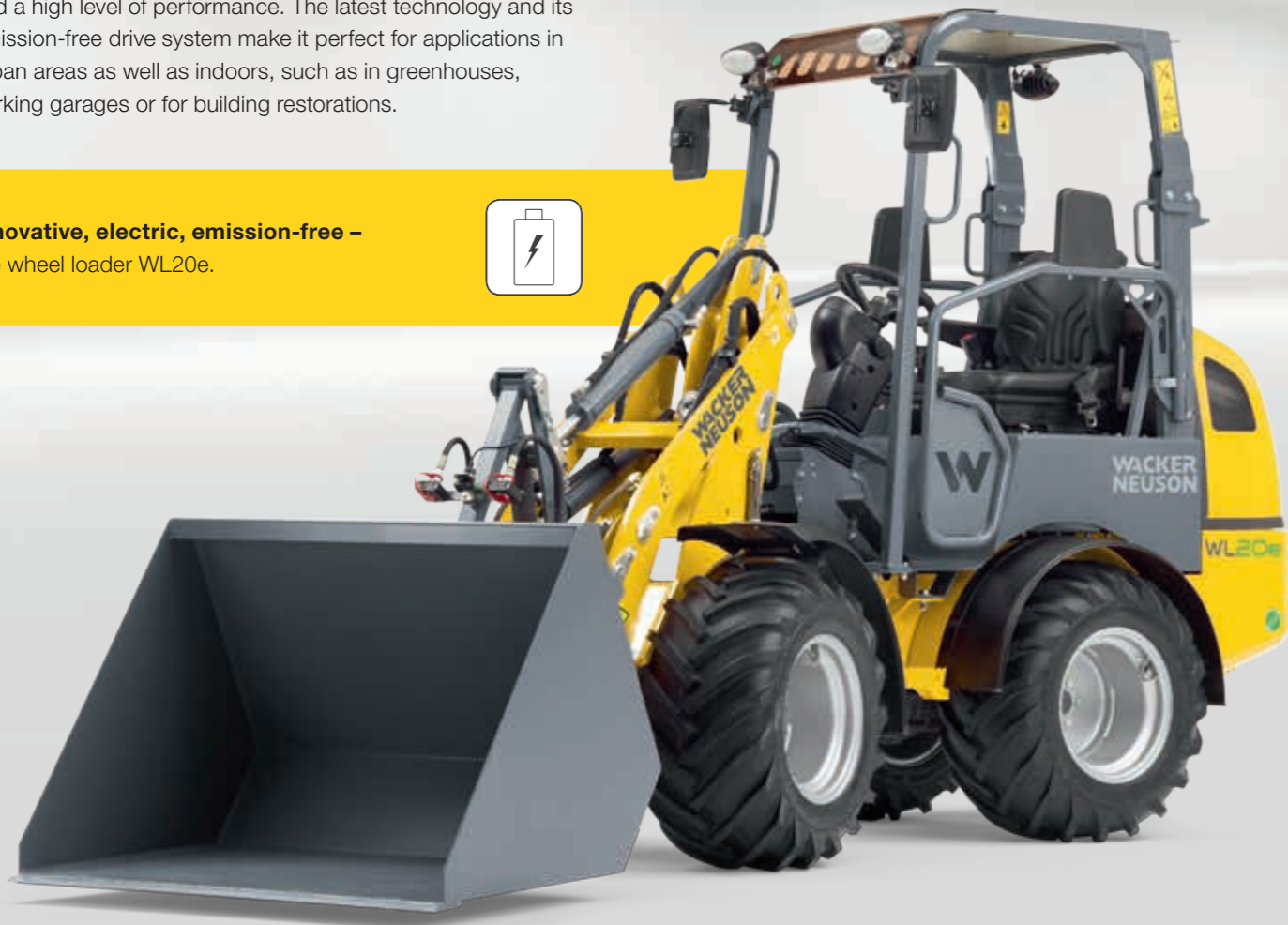


Two sturdy lift cylinders make a safe lift motion of the load arm possible.

WL20e

The WL20e is the first purely electrically operated wheel loader from Wacker Neuson. As with all of our wheel loaders, it convinces through time-tested and proven usage characteristics and a high level of performance. The latest technology and its emission-free drive system make it perfect for applications in urban areas as well as indoors, such as in greenhouses, parking garages or for building restorations.

Innovative, electric, emission-free –
the wheel loader WL20e.



- 100% emission-free
- Wireless battery drive
- The performance corresponds to that of the diesel-powered wheel loader WL20
- Separate electric motors for the drive system and for the work hydraulics – in this way, performance is requested as needed and the energy consumption is minimized
- Lower noise level for end users and possible residents
- Reduced service costs due to less maintenance-intensive elements



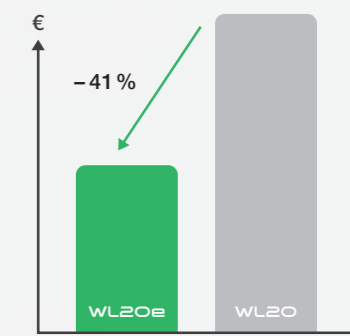
Up to 5 hours of running time are possible – depending on the type of application – with a fully charged battery (more about this on page 20).



Operating costs* for WL20e:

The 20% higher investment costs are amortized with an average machine service life after about 2,800 operating hours.

Operating costs* over the machine's service life



* Taken into consideration are energy and service costs as well as a battery replacement for the WL20e after about 1,200 charging cycles.

	WL20e
Bucket capacity (m ³)**	0.20
Operating weight (kg)	2,350
Motor output (kW)**	6.5/9

** 1.8 t/m³ bulk material density

*** Travel drive motor output S2 (60 min)/Lift motor output S3 (15%)

Easy charging: Connect battery connector with battery charger.



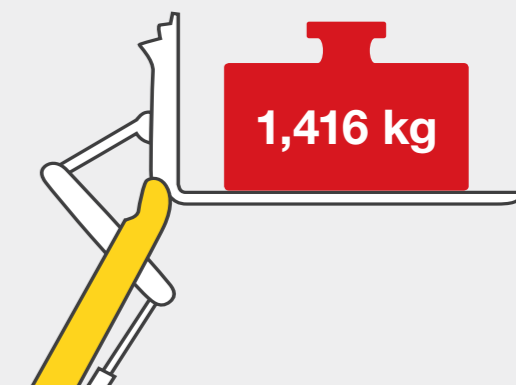
2 batteries to choose from: Running time of 2 to 5 hours depending on the application.



Always in view: The charge situation of the battery is shown on the display.



Tipping load 200 kg higher than with a conventional machine.



WL20, WL25, WL32

There are narrow spots on virtually every construction site. But you can go everywhere easily with the wheel loaders WL20, WL25 and WL32. For they are not only extremely maneuverable, but also designed to be extremely compact.

- Compact dimensions in width and height
- Easy maneuvering thanks to the small turning radius
- Powerful hydraulic system and matched engine output
- Numerous attachments for versatile applications
- Comfortable cabin
- Various driver's cabins to choose from (see page 17)
- Optional: eps-canopy for particularly low passage heights

Easy to transport: thanks to a weight of 2.3 tons suitable for trailers.

	WL20	WL25	WL32
Bucket capacity (m ³)	0.20	0.35	0.45
Operating weight (kg)	2,000	2,380	3,400
Engine output (kW)	17.9	24.6	36.3

* 1.8t/m³ bulk material density



Ideal for foot paths: available from a width of 960 mm.

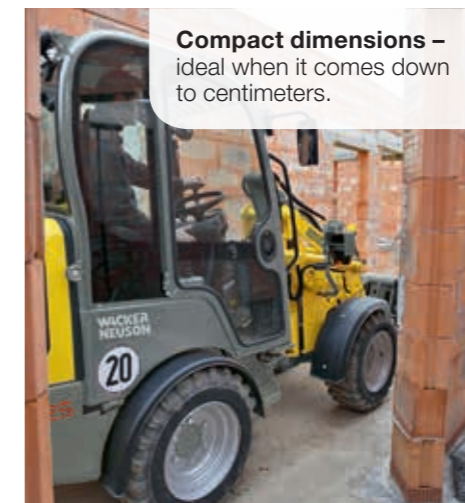


Compact and powerful: up to 100 liters of hydraulic output.

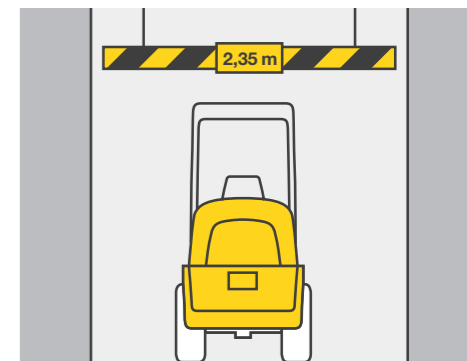
Year-round application – e.g. with a snow blade in the winter.



Folded down quickly: the operator's canopy eps (easy protection system).



Compact dimensions – ideal when it comes down to centimeters.



Whether a garage or building entrance: Low passage heights are not an obstacle.

WL34, WL38

The combination of efficiency output and compact dimensions is required for many application areas of wheel loaders. The WL34 and the WL38 offer you just that.

- Very compact dimensions
- Ideal combination of P and Z kinematics
- Transport on truck or in container thanks to the cabin height of less than 2.5 meters (for WL34)



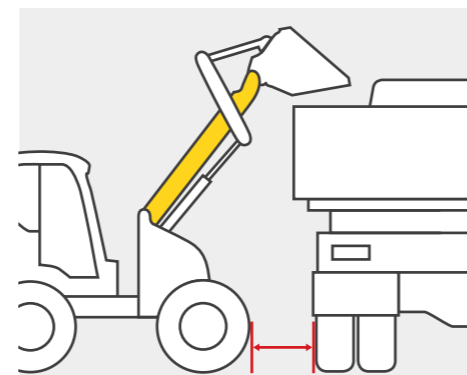
Economical and sturdy – the ideal entry-level model in its class.

	WL34	WL38
Bucket capacity (m ³)	0.6*	0.6**
Operating weight (kg)	3,270	4,200
Engine output (kW)	35.7	36.3

* 0.9t/m³ bulk material density
 ** 1.3t/m³ bulk material density



Exhaust emission standard stage 3A or 3B: overall three high horse-power engine versions to choose from.



Effortless loading, even with high tailgates, thanks to the load arm with a great lift height.



PZ-kinematics allows good ripping forces and finely coordinated parallel guidance.



Even manages 1.6 tons due to optimal weight distribution.

WL44, WL54

Whatever the task is on the construction site: Simply rely on the WL44 and WL54. These machines are powerful allrounders that can master anything.

- Cost-effective technology for a high level of productivity
- Great lift heights
- Extremely durable design
- Powerful hydraulics with many options, such as high flow
- Different engine outputs for every application area
- Single-door comfort cabin with a door that opens 180° as well as a glass window for an optimum overview of the working area
- Optional air-conditioning system
- Central heaping up also possible with a high tailgate thanks to the tremendous reach of the load arm

	WL44	WL54
Bucket capacity (m ³)*	0.8	1.0
Operating weight (kg)	4,600	5,800
Engine output (kW)	35.7	55.4

* 1.3 t/m³ bulk material density



Profitable all rounder –
for daily maximum performances.



Convincing – in any application area on the construction site.

WL52

Man and machine are equally called upon when moving large quantities of material. The WL52 is perfectly designed for many loading cycles. The operator is also spared during the long workday through comfort functions.

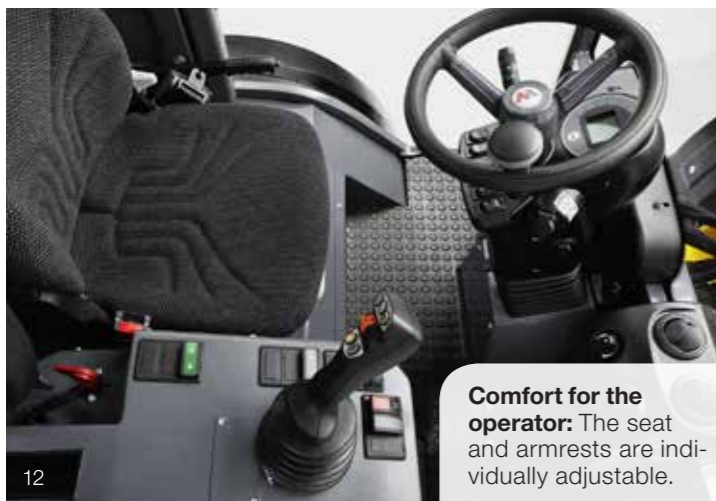
- Enormous efficiency output
- Very high ripping forces through the large-sized tipping cylinders
- Smooth and effortless joystick pilot control for fatigue-free working
- Two different height cabin types

	WL52
Bucket capacity (m ³)*	0.8
Operating weight (kg)	5,100
Engine output (kW)	55.4

* 1.6 t/m³ bulk material density



Agile powerhouse – plenty of power for any task.



Comfort for the operator: The seat and armrests are individually adjustable.



High bucket break-away force for large volumes due to the Z-kinematics.



Digging bucket with ripper teeth for powerful applications.



Optionally large cabin with the best view of the attachment.

WL60, WL70

Wheel loaders do not just need to convince in terms of performance efficiency, but also in terms of consumption and operating comfort. Innovative solutions therefore make the WL60 and WL70 role models in their class.

- Ideal for inner-city work thanks to engine technology with soot particulate filter that also meets the latest exhaust emission standard stage 3B.
- Optional flow sharing valve package with simultaneous operation of several work functions, such as lifting, rolling and auxiliary control circuits – for greater time savings and a higher level of productivity
- Sturdy load arm design with the highest lift height in this class
- Optionally 150 l/min load sensing hydraulics: for increased operating comfort as well as reduced fuel consumption
- If desired, up to two electrical functions of attachments are controllable via the joystick

	WL60	WL70
Bucket capacity (m ³) [*]	1.0	2.0
Operating weight (kg)	5,900	7,000
Engine output (kW)	75	86

* 1.6 t/m³ bulk material density

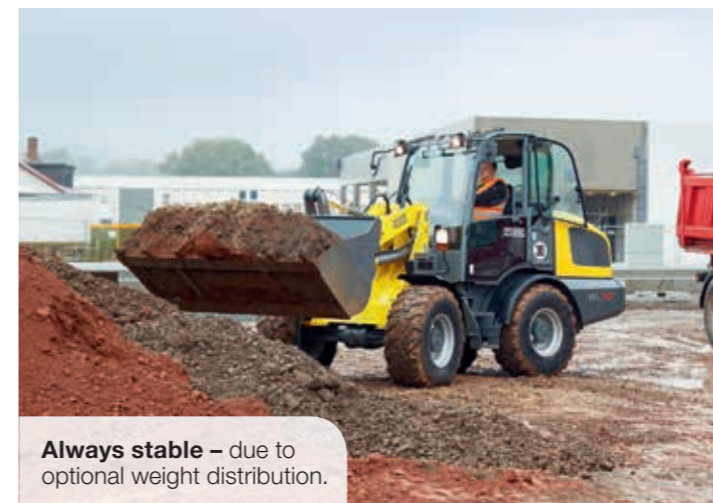
Optional engines with different capacities: 75/86 kW.



High stability due to 7-ton overall weight.



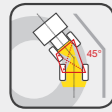
Directly on the joystick: proportional hydraulic control system for 3rd and 4th control circuit.



Always stable – due to optional weight distribution.



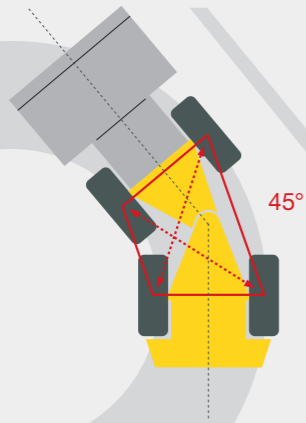
With the 4-in-1-bucket, material is optimally picked up and evenly distributed thanks to the proportional control.



Articulated pendulum joint

Tight curves, small slopes – every construction site is different. An articulated pendulum joint provides important services for the safe transport of the material to its destination. It provides for the best possible stability and maneuverability. This also allows you to work efficiently and safely in confined spaces.

An articulated pendulum joint allows for angles of up to 45°.



Maximum traction: All wheels remain in contact with the ground.

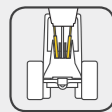
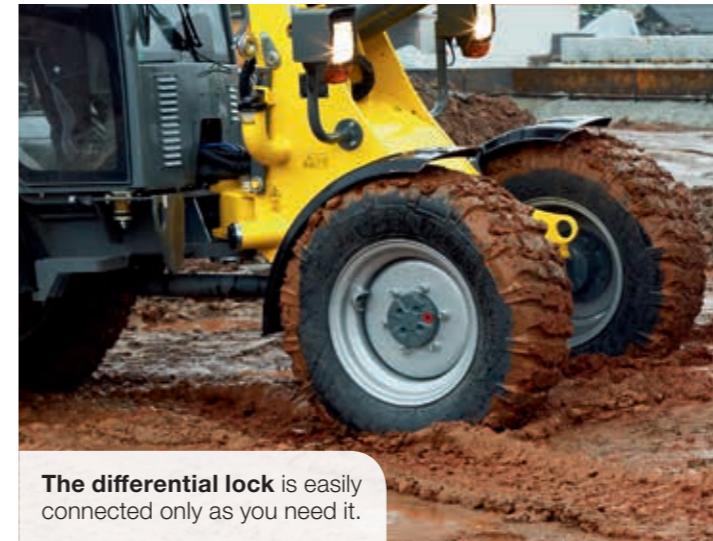


Differential lock

The 100% connectable differential lock engages in order to work reliably on difficult terrain. The result: maximum thrusting forces with excellent traction.

The lock is not engaged during normal driving operation. This protects the tires from unnecessary wear and also protects the surface being driven on.

All diesel-powered wheel loaders from Wacker Neuson have a differential lock.



Two lift cylinders

For even more stability of the loading system, all wheel loaders from Wacker Neuson are equipped with two lift cylinders. In this way, the hydraulic power is optimally distributed on the load arm.



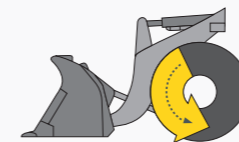
Inch brake pedal

Full power for the hydraulics and at the same time reducing the travel speed: To do this, you only need one pedal with the Wacker Neuson wheel loaders. You can regulate both mechanical as well as hydraulic braking ("inching") via the brake-inch pedal.

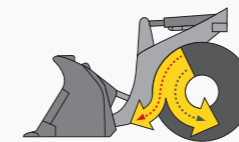
The advantages are obvious: less wear of the service brake and optimal power distribution of the engine output.

All wheel loaders from Wacker Neuson have a brake-inch pedal.

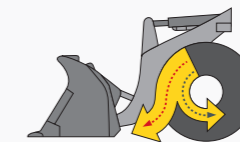
Inch brake pedal: Engine output where it is needed.



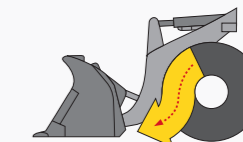
No pressure on the brake-inch pedal: full power for the drive system.



Slightly depressed brake-inch pedal: Speed is reduced, more power to the work hydraulics.



Further depressed brake-inch pedal: The speed is reduced further, even more power to the work hydraulics.



Further depressed brake-inch pedal: The wheel loader stands still, full power to the work hydraulics.

Cabin

Comfort and a high degree of ergonomics in the cabin should allow the operator to work for hours fatigue-free and productively. The spacious cabins are, for example, well-dampened to offset vibrations. Depending on the model, there are additional intelligent functions, such as the joystick, which puts many functions in one of the operator's hands.

Work comfortably: air-cushioned comfort seat and adjustable steering wheel.



Multifunction joystick for convenient operation.



Adjustable joystick console moves jointly with the operator's seat



Good 360°-view and with the loaded material always in sight.



Pleasant working climate thanks to the gap ventilation, good air circulation and optional air-conditioning system.

Driver's cabins

All three driver's cabins of the Wacker Neuson wheel loaders are perfectly designed for the requirements of everyday construction site life and meet high safety standards.

- ROPS-protection (roll-over protective structure)
- FOPS-protection (falling object protective structure)

Cabin



Fixed operator's canopy



Fold-down operator's canopy

for WL20, WL20e and WL25eps (easy protection system).



Long service life

You can rely on the best quality down to the last detail. A high material thickness of the load arms ensure reliable stability. The powder-coating also makes it sturdy against mechanical impacts and corrosion.

Maintenance

Open service access to hydraulics, engine and air cleaner: Depending on the model, you only need a few simple steps with the laterally tiltable driver's cabin as well as easy-to-open service flaps. The quick maintenance shortens downtimes and you therefore save money.



Attachments

The tasks for wheel loaders are varied and so also are the attachments from Wacker Neuson. With our comprehensive and sophisticated product range, you will make a multifunctional machine out of any model.

The right attachment for every machine



The exact specifications and availabilities of attachments differ depending on the model and country. Your Wacker Neuson partner is happy to help you.



Work efficiently with the right attachment.



Hydraulic tool change directly from the operator's seat.

Tires

The right wheel loader tires play an important role in specific applications. Everything runs perfectly if the tires are optimally matched to the ground surface and application area. Four treads are available to choose from.

Tread selection for wheel loaders



RP tread (turf)

- Gentle driving on the ground due to the large contact surface
- For use on lawns



AS tread (tractor)

- Tapered lamellas
- For smeary and very dirty soils



EM tread (earth moving)

- Parallel-running lamellas
- Large contact surface and therefore good traction force transmission and high running smoothness on the street
- For loose soils, such as sand, gravel or crushed stone



MPT tread (industry)

- Very broad application spectrum
- Good traction in uneven ground conditions
- Allows for quick road crossings



The exact specifications and availabilities of tires differ depending on the model and country. Your Wacker Neuson partner is happy to help you.



Advance reliably, even on sandy soils.



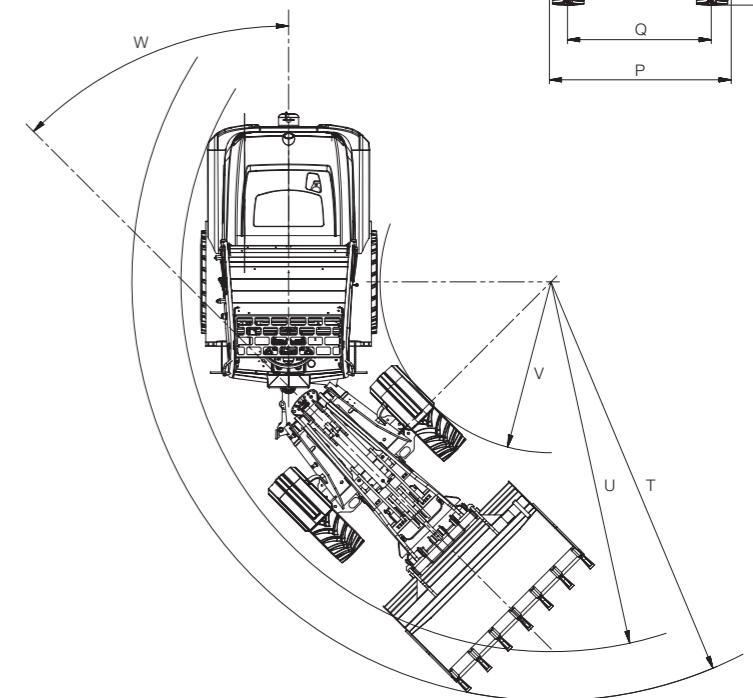
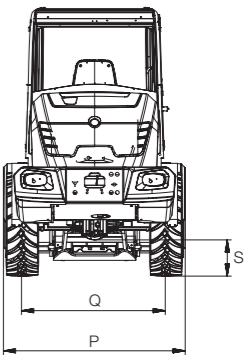
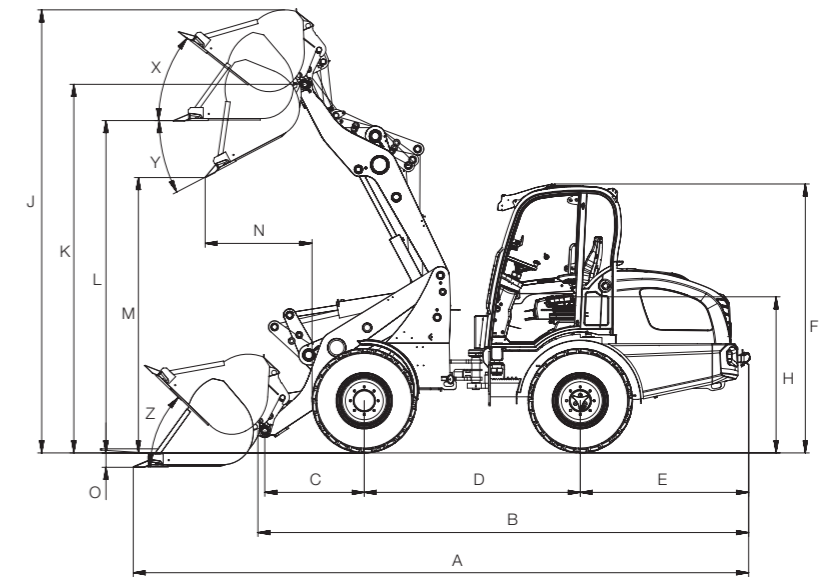
Show profile: We offer you tires for any ground - such as gravel.

Dimensions

WHEEL LOADER

		WL20e	WL20	WL25	WL32	WL34	WL38	WL44	WL52	WL54	WL60	WL70
DIMENSIONS		UNIT										
Standard tires		-										
Standard bucket		-										
Standard tires		27x10.5-15 EM ET-5	27x10.5-15 EM ET-5	10x16.5 EM ETO	10x16.5 EM ETO	12.0/75-18 MPT ET-30	15/55-18 EM ETO	12.5-18 MPT ETO	405/70-18 EM ETO	12.5-18 MPT ETO	405/70-18 EM ETO	405/70-18 EM ETO Water filling volume
Standard bucket		Earth bucket 1,150 mm 0.2 m ³	Earth bucket 1,150 mm 0.2 m ³	Earth bucket 1,250 mm 0.35 m ³	Earth bucket 1,400 mm 0.45 m ³	Earth bucket 1,650 mm 0.6 m ³	Earth bucket 1,650 mm 0.6 m ³	Earth bucket 1,900 mm 0.8 m ³	Earth bucket 1,900 mm 0.75 m ³	Earth bucket 2,000 mm 1.0 m ³	Earth bucket 2,000 mm 0.95 m ³	Earth bucket 2,200 mm 1.1 m ³
A	Overall length	mm	3,721	3,721	4,087	4,755	4,960	5,138	5,542	5,489	5,760	5,898
B	Total length without bucket	mm	3,063	3,063	3,302	4,022	4,126	4,281	4,647	4,649	4,828	4,780
C	Center of axle up to the bucket swivel point	mm	508	508	532	675	701	675	1,027	1,025	991	991
D	Wheel base	mm	1,468	1,468	1,612	1,952	2,020	2,045	2,005	2,008	2,150	2,150
E	Rear overhang	mm	975	975	1,045	1,290	1,296	1,516	1,531	1,531	1,676	1,676
F	Height (min./max.)	mm	2,209	1,880-2,302*	1,877-2,291*	2,336/2,348*	2,248/2,335*	2,371/2,548*	2,313/2,471/2,543*	2,495/2,672*	2,495/2,532*	2,693
H	Seat height	mm	1,245	1,225	1,259	1,354	1,169	1,204	1,470	1,559	1,495	1,609
J	Total working height	mm	3,294	3,274	3,582	3,715	3,901	4,007	4,056	4,025	4,561	4,409
K	Max. height of the bucket swivel point	mm	2,713	2,693	2,862	3,208	3,222	3,251	3,352	3,358	3,671	3,686
L	Overhead loading height	mm	2,444	2,424	2,573	2,954	2,984	2,892	3,019	3,029	3,335	3,375
M	Dumping height	mm	2,031	2,011	2,047	2,425	2,444	2,379	2,474	2,521	2,864	2,841
N	Reach with M	mm	330	350	337	252	344	155	694	625	875	799
O	Scraping depth	mm	94	94	50	50	33	120	123	113	114	74
P	Overall width	mm	1,076	1,076	1,210	1,414	1,570 (1,415)	1,570	1,730	1,874	1,750	1,829
Q	Track width	mm	810	810	940	1,148	1,260 (1,125)	1,200	1,383	1,432	1,432	1,422
S	Ground clearance	mm	207	207	250	275	294	312	357	364	352	375
T	Maximum radius outside	mm	2,681	2,681	2,912	3,534	3,510	3,652	4,105	3,943	4,242	4,072
U	Radius on the outer edge	mm	2,356	2,356	2,590	3,171	3,219	3,317	3,587	3,461	3,785	3,686
V	Inside radius	mm	1,219	1,219	1,330	1,731	1,745	1,640	1,753	1,538	1,931	1,666
W	Articulation angle	Degrees	45°	45°	45°	45°	45°	45°	42°	42°	42°	45°
X	Rollback max. lift height	Degrees	50°	50°	48°	49°	54°	43°	43°	44°	44°	33°
Y	Max. tipping angle	Degrees	38°	38°	42°	44°	40°	42°	39°	39°	28°	33°
Z	Rollback angle on the ground	Degrees	48°	48°	46°	39°	48°	41°	42°	43°	38°	39°

* depending on the driver's cabin (fixed operator's canopy, fold-down operator's canopy, cabin)



Standard equipment and options

WHEEL LOADERS

	WL20e	WL20	WL25	WL32	WL34	WL38	WL44	WL52	WL54	WL60	WL70
ENGINE / MOTOR											
Perkins 403D-11 17.9 kW	-	●	-	-	-	-	-	-	-	-	-
Perkins 403D-15 23.4 kW	-	○	-	-	-	-	-	-	-	-	-
Perkins 404D-15 24.6 kW	-	-	●	-	-	-	-	-	-	-	-
Perkins 404D-22 35.7 kW	-	-	-	●	-	●	-	-	-	-	-
Perkins 404D-22 36.3 kW	-	-	-	●	-	●	-	-	-	-	-
Perkins 404F-22T 44.7 kW	-	-	-	○	-	○	○	-	-	-	-
Deutz TCD 2.9 L4 55.4 kW	-	-	-	-	-	○	○	●	●	-	-
Deutz TCD 2.9 L4 55.4 kW DPF	-	-	-	-	-	○	○	○	○	-	-
Perkins 854E-E34TA 75 kW	-	-	-	-	-	-	-	-	-	●	-
Perkins 854E-E34TA 86 kW	-	-	-	-	-	-	-	-	-	○	●
Battery / electric motor drive system	●	-	-	-	-	-	-	-	-	-	-
LIGHTING											
Rotating beacon	○	○	○	○	○	○	○	○	○	○	○
Work lights, 2 in front, 2 in rear; WL20 (1 in rear)	●	●	●	●	●	●	●	●	●	●	●
LED work lights, 2 in front, 2 in rear; WL20 (1 in rear)	○	○	-	○	○	○	○	○	○	○	○
ELECTRONICS											
Front plug receptacle, triple-pole	○	○	○	-	○	-	○	-	○	-	-
Front plug receptacle, 7-pole	-	○	-	○	-	○	○	○	○	○	○
Rear plug receptacle, 7-pole	-	○	○	○	-	○	○	○	○	○	○
Front plug receptacle, with joystick control	-	-	-	○	-	○	○	○	○	○	○
Rear plug receptacle, 3-pole with lever	-	-	-	○	○	○	-	○	-	○	○
FRONT AREA HYDRAULICS											
Unpressurized return front	○	○	○	○	○	○	○	○	○	○	○
3d. control circuit, in front DN10	●	●	●	-	-	-	-	-	-	-	-
3d. control circuit, in front DN12	-	-	-	●	●	●	●	●	●	●	●
3d. comfort control circuit	○	-	○	-	○	-	○	-	○	-	-
4th. comfort control circuit	○	-	○	-	-	-	○	-	○	-	-
3d. control circuit proportionally controlled, parallel	-	-	-	●	-	●	○	●	○	●	●
3d. control circuit proportionally controlled, serial	-	-	-	○	-	○	-	○	-	○	○
4th. Proportional-controlled control circuit	-	-	-	○	-	○	○	○	○	○	○
Hydraulic pump 22.5 ccm	-	-	-	○	○	○	●	-	-	-	-
Hydraulic pump 25 ccm	-	-	-	○	-	○	○	-	-	-	-
Hydraulic pump 28 ccm	-	-	-	-	○	-	○	-	●	-	-
Hydraulic pump 32 ccm	-	-	-	-	-	○	○	●	○	-	-
Hydraulic pump 36 ccm	-	-	-	-	-	-	-	○	-	-	-
Hydraulic pump 40 ccm	-	-	-	-	-	-	-	-	-	●	●
Hydraulic pump 45 ccm	-	-	-	-	-	-	○	-	○	○	○
High flow single action	-	-	-	-	-	○	-	○	-	-	-
4th. control circuit Flow Sharing	-	-	-	-	-	-	-	-	-	○	○
High Flow EW 100 Load-Sensing	-	-	-	-	-	-	○	-	○	-	-
High Flow EW 150 Load-Sensing	-	-	-	-	-	-	-	-	-	○	○

● Standard ○ Option - not suitable

WHEEL LOADERS

	WL20e	WL20	WL25	WL32	WL34	WL38	WL44	WL52	WL54	WL60	WL70
REAR AREA HYDRAULICS											
Rear hydraulic connection, single-acting	-	○	○	○	○	-	○	-	○	-	-
Rear hydraulic connection, dual-acting	-	○	-	○	-	○	-	○	-	○	○
Rear hydraulic connection, electrical valve	-	-	○	-	-	-	-	-	-	-	-
Unpressurized return rear	-	-	○	○	-	○	○	○	○	○	○
Hydraulic connection rear, additional, single	-	-	-	○	-	○	○	○	○	○	○
Hydraulic connection rear, additional, double	-	-	-	○	-	○	-	○	-	○	○
DRIVER'S CABIN											
eps (easy protection system) operator's canopy, roll-over protective structure and FOPS tested	○	○	○	-	-	-	-	-	-	-	-
Low operator's canopy, ROPS and FOPS tested	-	●	●	●	●	-	●	-	-	-	-
High operator's canopy, ROPS and FOPS tested	●	-	-	-	○	-	●	-	●	-	-
Low cabin	-	-	-	○	○	●	○	○	○	-	-
High cabin	-	○	○	-	○	-	○	●	○	-	-
High cabin Comfort	-	-	-	-	-	○	○	○	○	●	●
High cabin Comfort, single-door	-	-	-	-	-	-	○	-	○	-	-
OTHER											
Air-conditioning system	-	-	-	○	-	○	○	○	○	○	○
Lifting arm damping	-	-	○	○	○	○	○	○	○	○	○
Central lubrication system	-	○	○	○	○	○	○	○	○	○	○
Manual throttle *	-	-	-	○	-	○	○	○	○	○	○
Hand inching	-	-	○	○	-	○	○	○	○	○	○
Engine pre-heating 230 V	-	○	○	○	○	○	○	○	○	○	○
Approval as tractor unit D**	-	-	-	○	○	○	○	○	○	○	○

* not available with TCD2.9DPF engine

** please contact Wacker Neuson for other countries

Technical data

		WL20e	WL20	WL25	WL32	WL34	WL38	WL44	WL52	WL54	WL60	WL70
ENGINE		UNIT										
Manufacturer	–	–	Perkins	Perkins	Perkins	Perkins	Perkins/Deutz	Perkins/Deutz	Deutz	Deutz	Perkins	Perkins
Max. engine output (optional)	kW	–	17.9 (23.4)	24.6	36.3 (44.7)	35.7	36.3/44.7/55.4	35.7/44.7/55.4	55.4	55.4	75 (86)	86
Max. engine output (optional)	hp	–	24 (32)	33	50 (60)	49	50	49/60/75	75	75	102 (117)	117
at max. RPM (optional)	rpm	–	2,800 (2,600)	2,800	2,800	2,600	2,800/2,800/2,300	2,600/2,800/2,300	2,300	2,300	2,500	2,500
Displacement (optional)	cm³	–	1,131 (1,496)	1,508	2,216	2,216	2,216	2,216/2,216/2,900	2,900	2,900	3,400	3,400
Travel drive motor , capacity S2 (60 minutes)	kW	6.5	–	–	–	–	–	–	–	–	–	–
Lifting motor , capacity S3 (15%),	kW	9	–	–	–	–	–	–	–	–	–	–
WEIGHTS		UNIT										
Operating weight FSD / cabin	kg	2,350	2,000/2,250*	2,380/2,520*	3,400*	3,270	4,200/4,300**	4,600	5,100	5,800	5,900	7,000
Bucket breakout force (according to ISO 14397-2)	daN	2,170	1,280	1,989	4,269	4,427	4,128	2,838	4,243	3,513	4,034	4,032
Bucket capacity	m³	0.2	0.2	0.35	0.45	0.6	0.6	0.8	0.8	1.0	1.0	2.0
Bucket tipping loads (according to ISO 14397) Loading frame horizontal – Machine straight	kg	1,348	1,240/1,330*	1,508/1,626*	2,013/2,216*	2,300	2,952/3,265**	2,626	3,208	3,270	3,777	4,753
Pallet fork tipping loads (according to ISO 14397) Loading frame horizontal – Machine straight	kg	1,089	903/1,095*	1,150/1,249*	1,732/1,902*	2,058	2,570/2,726**	2,258	2,687	3,035	3,330	4,185
Driver's cabin (optional)	–	FSD (eps, cabin)	FSD (eps, cabin)	FSD (eps, cabin)	FSD (cabin)	FSD (cabin)	Cabin	FSD (cabin)	Cabin	FSD (cabin)	Cabin	Cabin
Travel speed (optional)	km/h	0–15	0–20 (30)	0–20 (30)	0–20 (28)	0–20 (28)	0–20 (28)	0–20 (30)	0–20 (30)	0–20 (30)	0–20 (30)	0–20 (30)
Fuel tank capacity	l	–	20	45	65	55	65	82	82	82	105	105
Hydraulic oil tank capacity	l	18.5	20	27	35	65	50	66	66	66	95	95
HYDRAULIC SYSTEM		UNIT										
Drive hydraulics working pressure (optional)	bar	–	330 (450)	450	450	450	445	445	445	445	445	445
Work hydraulics discharge volume (optional)	l/min	32	30.8 (36.4)	45	56 (63–100)	49	56 (63–116)	58.5/70/64	73.6 (83–116)	64	100 (150)	100 (150)
Work hydraulics working pressure	bar	225	225	185	210	210	210	210	230	210	210	210
DRIVE SYSTEM		UNIT										
Drive type / drive system	–	electrically via universal joint shaft	hydrostatic via universal joint shaft	hydrostatic via universal joint shaft	hydrostatic via universal joint shaft	hydrostatic via universal joint shaft	hydrostatic via universal joint shaft	hydrostatic via universal joint shaft	hydrostatic via universal joint shaft	hydrostatic via universal joint shaft	hydrostatic via universal joint shaft	hydrostatic via universal joint shaft
NOISE CHARACTERISTIC VALUES		UNIT										
Averaged sound power level LwA	dB (A)	91.8	98.4	100.1/99.7	99.8	99.5	99.3	100.2	100.3	100.5	101	101
Guaranteed sound power level LwA	dB (A)	92	101	101	101	101	101	101	101	101	103	103
Specified sound pressure level LpA	dB (A)	76	84	85/82	82	75	78	78	78	75	78	78

* with cabin ** values with optional Deutz engine

		WL20e	WL20e
		Standard battery	Optional battery
BATTERY		UNIT	
Battery voltage	V	48	48
Rated capacity K5	Ah	240	300
Battery weight (±5%)	kg	394	450
Charging time	h	8	6
Running time under hard long-time application with heavy material handling, uninterrupted operation	h	1.5'	2.1'
Running time under normal activities , uninterrupted operation	h	2–3.5'	2.8–4.5'
Running time under normal activities with interruptions (30 min. driving, 30 min. standstill)	h	up to 4'	up to 5'

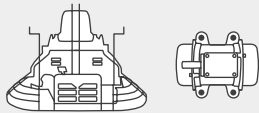
* The running times of the battery are strongly dependent on the respective application conditions, the job and the driving style. This may also mean that a longer running time can be achieved. The specified running times may also fall short of in extreme cases. An interrupted operation (e.g. 30 min. driving, 30 min. standstill) prolongs the running time of the battery.

Your everyday work is full of challenges. We have the right solutions and help you to be ahead of the competition. We offer you everything you need for this purpose:
Wacker Neuson – all it takes!

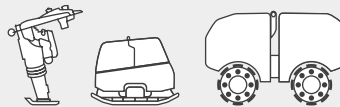


**WACKER
NEUSON**
all it takes!

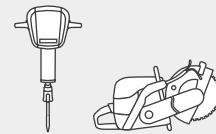
Products



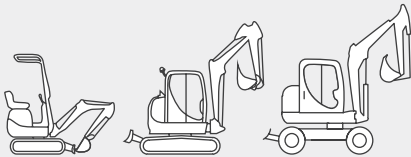
Concrete technology



Compaction



Demolition technology



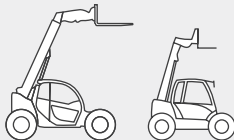
Excavators



Wheel loaders



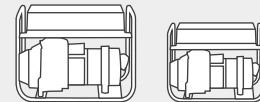
Skid steer loaders



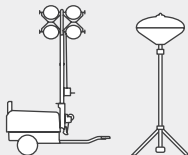
Telehandlers



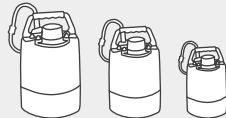
Dumpers



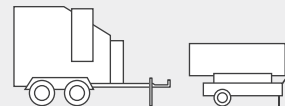
Generators



Lighting



Pumps



Heaters



Used equipment

Services rendered



Financing



Repair & maintenance



Academy



Rental



Telematics

Spare parts



www.wackerneuson.com



WN.EMEA.10094.V03.EN-US